



EZ Way, Inc.

"Your Total Safe Patient Handling Solution"

EZ Way Flexible Fabric Shin Pad

The Flexible Fabric Shin Pad is designed for use with Smart Stands.

***Note:** The Flexible Fabric Shin Pad can be used on the following models: S400PN, S500PN, S400PS1, and S500PS1

- Pliable fabric shin pad
- Can be ordered with new Stands*
- Provides greater comfort for a variety of leg sizes and skin conditions
- Wipeable
- Easy to swap out with existing shin pad
- Fits 400 lb. & 500 lb. Smart Stands*



Item Number 11202
Flexible Fabric Shin Pad

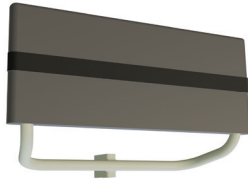
"Your Total Safe Patient Handling Solution"



EZ Way Flexible Fabric Installation Instructions

The Flexible Fabric Shin Pad is designed for use with Smart Stands.

Note: The Flexible Fabric Shin Pad can be mounted to the following models: S400PN, S500PN, S400PS1, and S500PS1. Use the existing pin from the Molded Foam Shin Pad when replacing it with the Flexible Fabric Shin Pad.



Flexible Fabric Shin Pad



Locking Pin

Instructions for replacing the Molded Foam Shin Pad with the Flexible Fabric Shin Pad:

1. Remove the securing pin on the shin pad assembly by grasping the ring and pulling the pin out.
2. Grasp the Molded Foam Shin Pad with two hands and pull the assembly out of the enveloping tube.
3. Grasp the Flexible Fabric Shin Pad with two hands and insert the assembly into the enveloping tube until the hole in the assembly aligns with the hole in the enveloping tube.
4. Secure the Flexible Fabric Shin Pad assembly to the enveloping tube by inserting the pin through both holes.



Please contact EZ Way at 1-800-627-8940 with any questions.