



EZ Way, Inc.

Service Manual

Classic Lift



EZ Way, Inc.

Table of Contents

Lift Maintenance	3
Lift Service	4
Specifications	5
Parts Breakdown	7
Cleaning and Disinfection	8
Emergency Down Operation.	9
Troubleshooting	10
Lift Actuator Replacement	11
Leg Spread Actuator Replacement	12
Control Box Replacement	14
Preventive Maintenance	16
Warranty Information	18



Lift Maintenance

- The EZ Way Classic Lift shall be maintained by competent staff according to the maintenance checklist provided.
- The EZ Way Lift should be cleaned bi-annually at minimum with a hospital grade disinfecting cleaner. The EZ Way Classic Lift should not be immersed in cleaning solutions, and solvents and abrasive chemicals should not be used.



Caution: The EZ Way Classic Lift must be powered off and unplugged from the wall power outlet prior to cleaning. Ensure that the Classic Lift is completely dry before reconnecting to wall power outlet.



Warning: Do not attempt to service the EZ Way Classic Lift while it is in use, serious injury could result.

- The EZ Way Classic Lift shall have a minimum anticipated life of 10 years of use.
- The EZ Way Classic Lift sling (or other accessories) shall have a minimum anticipated life of 1 year of use.
- Dispose of waste products in accordance with state and local laws. EZ Way recommends recycling when possible.
- Please refer to this manual for troubleshooting information. If this does not quickly resolve the issue, stop the procedure and contact EZ Way for further instruction.
- Removal of the power cord connection from the wall outlet isolates the internal circuits from the supply mains.

Lift Service

- The EZ Way Classic Lift shall be serviced and repaired by a qualified EZ way personnel or biomed technician. Contact an EZ Way representative for further instructions.
- EZ Way will make available on request circuit diagrams, component part lists, descriptions, calibration instructions, or other information that will assist service personnel to repair those parts of equipment that are designated by EZ Way as repairable by service personnel.
- This manual includes replacement instructions for components which are replaceable by service personnel. Contact EZ Way Service for information regarding items not covered in this manual.



EZ Way, Inc.

Specifications

Model: L500C1
Capacity: 500 lbs.
Weight: 127 lbs.
Protection class, Controller: IPX5
Protection class, Handset: IPX6
Internal battery charger: Switch Mode Power Supply
Input: 100 – 240 VAC (50/60 Hz)
Charge time: 4-5 hrs.
Power cord: NEMA1
 Medically approved

Motor Control: Electronic soft-start and soft-stop

Controls: Hand-held remote

Safety Features:

Emergency down function
 Manual down function
 Acoustic battery alarm at approx. 50% battery capacity
 Electronic overload protection (EOP)

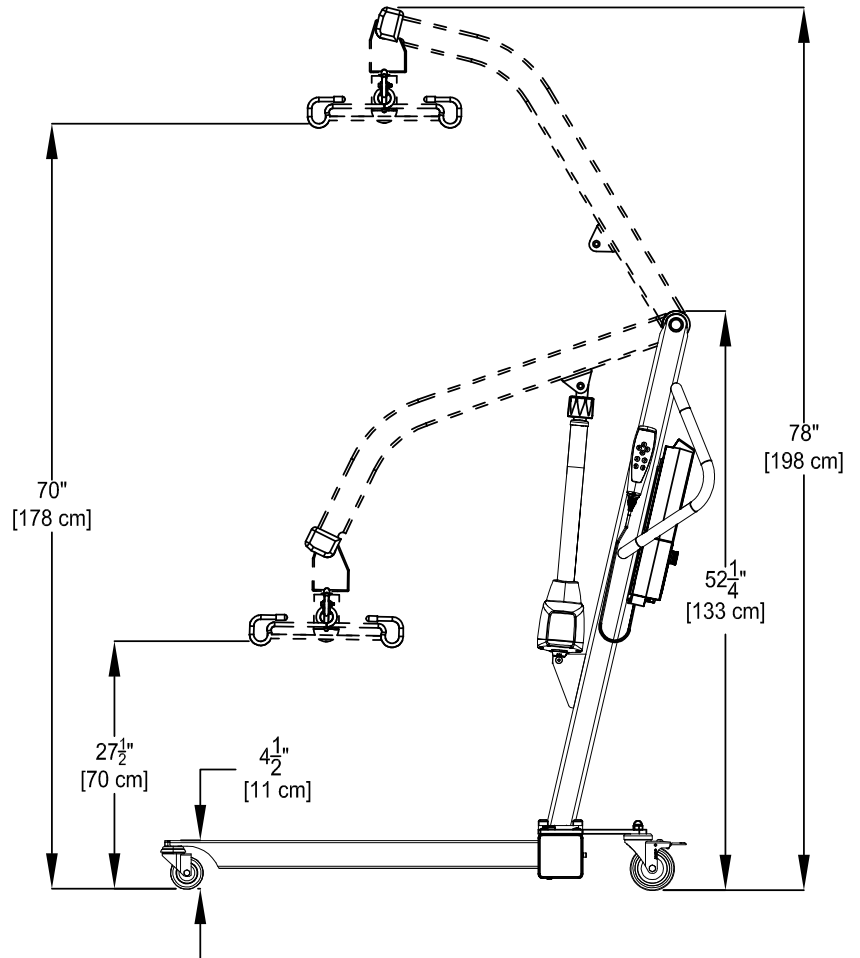
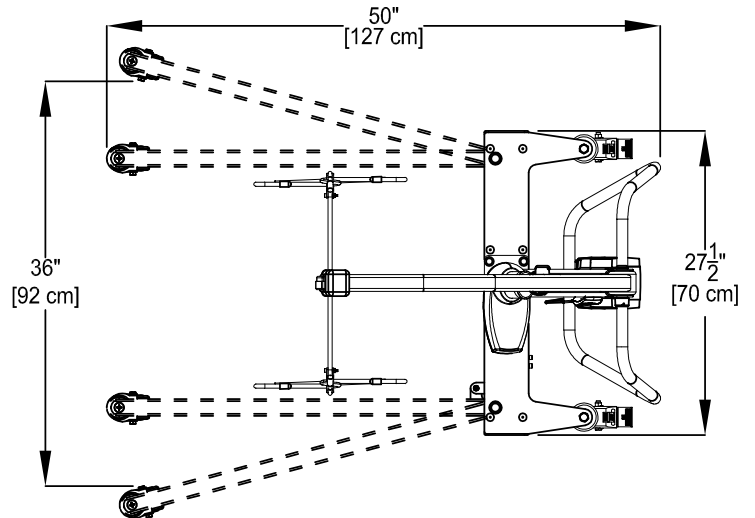
Duty cycle: Max. 10% or 2 min. continuous use then 18 min. without use

Approvals (Controller/Actuator only):

IEC60601-1:2005 3rd edition

ANSI / AAMI ES60601-1:2005 3rd edition

CAN / CSA-22.2 No 60601-1:2008

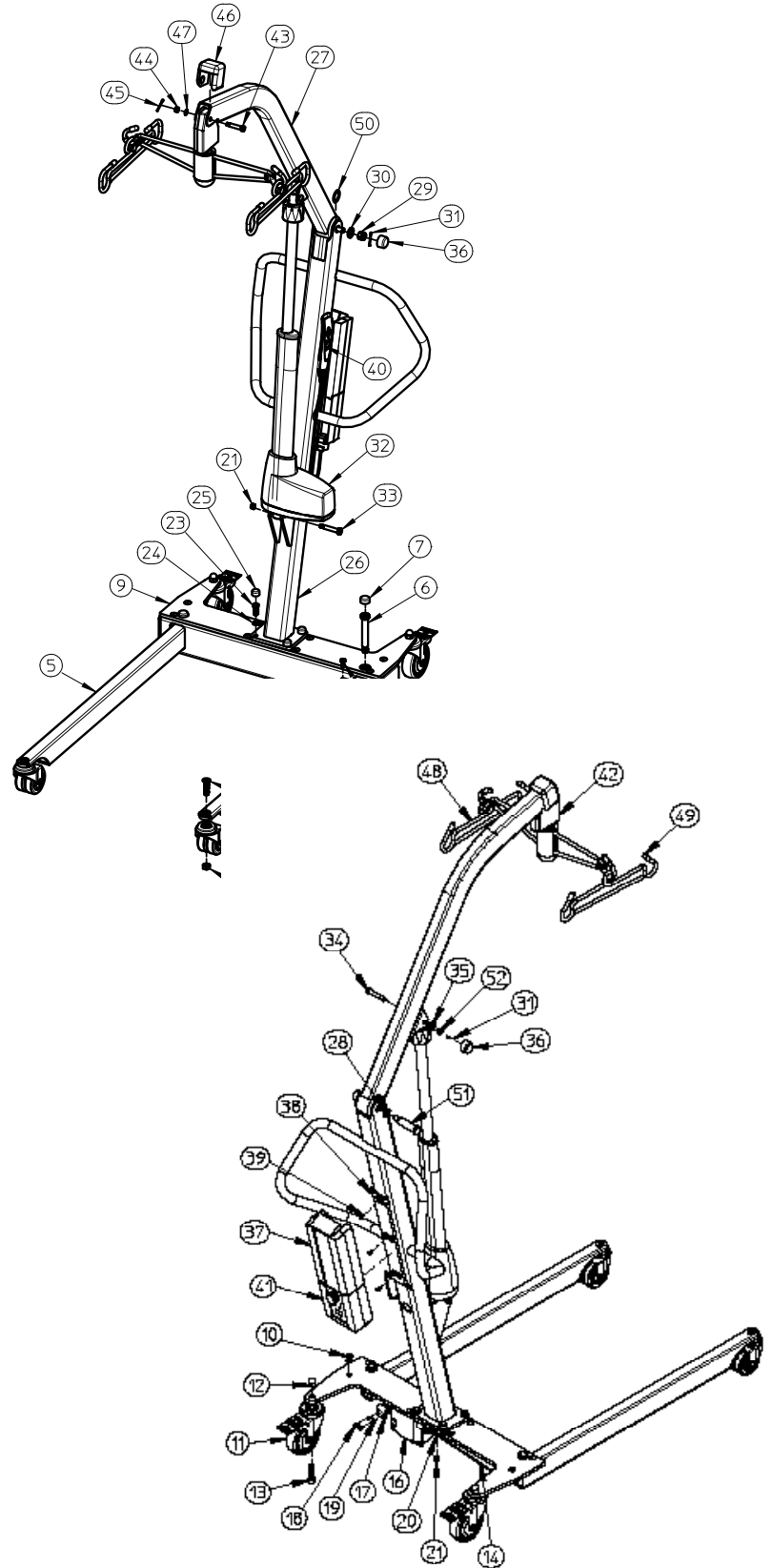




EZ Way, Inc.

Parts Breakdown

REF #	MATERIAL	MATERIAL DESCRIPTION	QTY
1	14500	CASTER FRONT-DUAL WHEEL	2
2	14705	SCR CAP FHSOC 1/2-13 X 1.75 ZN	2
3	12048	NUT HEX 1/2-13 ZP NYLON INSERT	2
4	16103	LEG LEFT SIDE - L500C1	1
5	16104	LEG RIGHT SIDE - L500C1	1
6	14662	SCR SHLDR 5/8-1/2-13 X 3.5 ZP	2
7	16109	CAP. .875 ID X .375 GRAY - L500C1	2
8	16105	BASE - L500C1	1
9	16108	BASE TOP PLATE - L500C1	1
10	16110	HUCK FASTENER - L500C1	9
11	12247	CASTER GREY REAR, 4 IN	2
12	11788	NUT ACORN 1/2-13 ZP	2
13	12043	SCR CAP HH G2 1/2-13 X 1.75 ZP	2
14	16101	LEG SPREADER LINKAGE - L500C1	1
15	16111	SCR SHLDR 5/16 X 1/4-20 - L500C1	2
16	16112	ACTUATOR, LEG SPREAD - L500C1	1
17	16102	ACTUATOR MOUNT, LEG SPREAD - L500C1	1
18	50615	SCR CAP BHSOC 1/4-20 X .75 ZP	2
19	16115	LOCK WASHER 1/4 - L500C1	2
20	16116	SCR SHLDR, HEX SCKT M10 X 25MM - L500C1	2
21	16117	LOCKNUT M8 - L500C1	3
22	16118	CAP, BASE TUBE - L500C1	2
23	11763	SCR CAP HH G8 3/8-16 X 1 ZP	4
24	13705	WASHER LOCK 3/8 ZP	4
25	16119	CAP. .625 ID X .375 GRAY - L500C1	4
26	16106	MAST - L500C1	1
27	16107	BOOM - L500C1	1
28	16120	WASHER, PLASTIC, .75 ID X 1" OD - L500C1	1
29	12991	M12-1.75 CASTELLATED HEXNUT DIN937 ZINC	1
30	12998	WASHER CUSTOM 12MM ID	1
31	12999	COTTER PIN	2
32	16121	ACTUATOR, LIFT - L500C1	1
33	16123	SHOULDER SCREW - L500C1	1
34	16124	PIN, ACTUATOR TOP MOUNT, 10MM - L500C1	1
35	12147	WASHER, SPECIAL 3/8" ID	1
36	16125	CAP PLASTIC, MID GRAY - L500C1	2
37	16126	CONTROLLER - L500C1	1
38	16127	BRACKET, CONTROLLER - L500C1	1
39	12861	SCR THD-CTG #10-32 X .375 ZP TYPE F	3
40	16130	HAND SET - L500C1	1
41	16131	BATTERY - L500C1	1
42	16140	SPREADER BAR - L500C1	1
43	11757	3/8" SHOULDER BOLT, DRILLED	1
44	12992	NUT, SLOTTED 5/16-18	1
45	12704	COTTER PIN SMALL	1
46	16133	PAD BOOM END LIFT - GRAY - L500C1	1
47	12131	WASHER, THIN (5/16 ID X 5/8 OD X .031Z)	1
48	15305	HANGER SLING NCP LIFT	2
49	16134	CAP. .365" X .50" - GRAY - L500C1	4
50	16139	WASHER, 7/8" ID X 1-1/8" OD X 1/32" THICK	2
51	12996	PIN BOOM PIVOT 1000# LIFT	1
52	12133	3/8 HEX SLOTTED NUT	1
	16128	POWER CORD FOR CBJ- CLASSIC	1
	16129	VELCRO STRAP, POWER CORD- CLASSIC	1





EZ Way, Inc.

Cleaning and Disinfection / Emergency Down

Cleaning and Disinfection

- The lift may be cleaned with mild detergent or cleaner. Take care when applying cleaner around the control box to ensure liquid does not enter the control box.
- When using hospital grade disinfectants, test a small area prior to applying the cleaner to the lift.

Emergency Down Operation

The EZ Way Classic Lift controller features an emergency down button located below the red emergency stop switch.

To activate the emergency down function, use a small object to push the black button until the down function is activated. Release the button to stop the movement.



To use the manual down function, turn the red collar on the actuator shaft in a clockwise motion as indicated by the arrows on the collar.

Continue to turn the collar until the sling can be safely unhooked from the lift.

Call EZ Way Service for assistance.





EZ Way, Inc.

Troubleshooting

If the EZ Way Classic Lift fails to operate, check the following items:

1. Emergency stop switch: Rotate the red button clockwise to ensure the switch is not activated.
2. Battery: Make sure you have a battery with sufficient charge to operate the lift.
3. Connections: Check the connections to the control box. Make sure each cord is fully seated by pushing them into the control box.

If the above remedies do not restore the lift, call EZ Way Service at **800-627-8940**. It is helpful to have the lift near you when you call.



Lift Actuator Replacement

1. Unplug the lift actuator cord from the control box.
2. Remove the plastic cap that covers the nut on the top actuator pin.
3. Remove cotter pin, nut, and washer from the top actuator pin. Retain the pin, washer, and nut for reinstallation. (Fig A)
4. While supporting the boom with your shoulder, remove the top actuator pin and gently lower the actuator. Gently lower the boom.
5. Remove the nut on the lower actuator pin. Set the nut and pin aside for reinstallation with the new actuator.
6. While supporting the actuator, remove the lower actuator pin and remove the actuator.
7. Hold the replacement actuator in place with the lower end lined up in the lower mounting bracket.
8. Insert the pin through the bracket and actuator. (Fig B)
9. Install the nut on the pin and tighten it securely.
10. Plug the actuator into the control box and extend the actuator approximately 6".
11. Support the boom on your shoulder and line up the top of the actuator with the bracket on the boom. Insert the pin through the bracket and actuator. Line up the flat side of the pin with the "D" shaped hole in the bracket. (Fig C)
12. Install the washer with the flat side facing out. Install nut and tighten securely.
13. Line up a slot on the nut with the hole in the pin and insert a new cotter pin through the assembly. Bend the ends of the cotter pin around the nut and install the plastic cap over the assembly.
14. Test the actuator by extending it completely then retracting it. While retracting, test the anti-pinch feature by holding up on the boom while it is moving in the down direction.
15. The lift is now ready to be returned to service.



(Fig A)



(Fig B)



(Fig C)



EZ Way, Inc.

Leg Spread Actuator Replacement

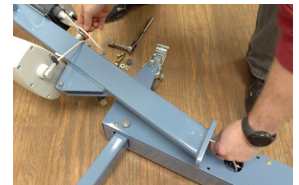
1. Lower the boom completely then unplug the leg spread actuator cord from the control box. The leg spread actuator is plugged into the #2 port. (Fig D)
2. While a helper steadies the mast and boom assembly, remove the four bolts at the base of the mast.
3. Gently lower the mast onto its side, allowing the lower end of the mast to rest on top of the base. (Fig E)
4. Gently pull the actuator cord out of the mast. (Fig F)
5. Remove the black cap from the left end of the base tube.
6. The hole in the top and bottom of the base allows access to remove the actuator pin from the leg spreader bar. (Fig G)
7. Remove the two socket head screws from the leg spread adjustment slot. (Fig H)
8. Remove the actuator from the end of the base while feeding the actuator cord through the hole in the top of the base.
9. Remove the actuator mounting bracket from the actuator and reinstall it on the new actuator. Tighten the actuator pin securely.
10. Feed the actuator cord through the base and out through the hole in the top of the base. (Fig I)
11. Insert the actuator in the base tube and line up the rod end with the hole in the leg spread bar.
12. Reinstall the actuator pin through the actuator and leg spread bar and tighten it securely.
13. Align the holes in the actuator mounting bracket with the leg spread adjustment slot. Reinstall the socket head screws through the slot but do not tighten them. (Fig J)
14. Feed the actuator cord into the mast and out the hole at the bottom of the control box.
15. With a helper, raise the mast onto the base and align the base of the mast with the holes in the base plate. Reinstall the four bolts to securely fasten the mast to the base plate.
16. Plug the actuator cord into the control box and use the hand control to adjust the leg spread to the closed position.
17. Manually move the legs so they are in the closed position and tighten the socket head bolts in the leg spread adjustment slot.
18. Test the function by using the hand control to adjust the legs to the fully open position and back to the closed position.
19. Reinstall the plastic caps and return the lift to service.



(Fig D)



(Fig E)



(Fig F)



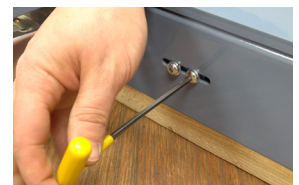
(Fig G)



(Fig H)



(Fig I)



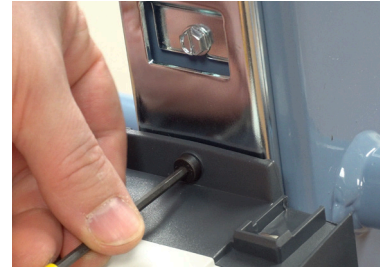
(Fig J)



EZ Way, Inc.

Control Box Replacement

1. Remove the battery pack from the control box.
2. Unplug the power cord, hand control cord, and both actuator cords from the control box. Note which ports each of the actuator cords are plugged into.
3. Remove the mounting screw that fastens the control box to the mounting bracket. (Fig K)
4. Lift the control box off of the mounting bracket.
5. Install the new control box, bottom first onto the mounting bracket. (Fig L)
6. Reinstall the mounting screw and tighten securely.
7. Plug the power cord, actuator cords, and hand control cord into their respective ports on the bottom of the control box.
8. Reinstall the battery onto the control box and test all operations.
9. The lift is now ready to be returned to service.



(Fig K)



(Fig L)



EZ Way, Inc.

Preventive Maintenance

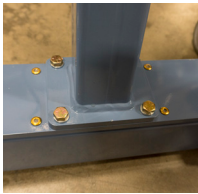
The EZ Way Classic Lift requires a minimum of servicing to keep it in good working order. Nevertheless, it is important that certain basic checks be periodically made by maintenance staff to ensure on-going safety throughout the life of the device.

The manufacturer suggests that the following components and operating points be scheduled for inspection at intervals not greater than 6 months. Any detected deficiency must be rectified before the lift is put back into service.

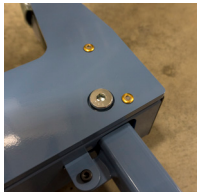
- 1 Check wear of hanger assembly bushing** by moving hanger assembly up and down. If hanger assembly moves up and down and the thickness of 2 quarters can be inserted between hanger assembly and load cell the hanger assembly needs to be replaced.



- 2 Check all bolts** to ensure they are tight.



BASE



PIVOT



REAR WHEEL



FRONT WHEEL

- 3 Check boom to hanger assembly pivot bolt**, peel rubber back to assure nut is tight and cotter pin is in place. Check boom to mast pivot bolt by removing plastic cap to assure nut is tight and cotter pin is in place. If plastic cap is missing order replacement.



BOOM TO HANGER



BOOM TO MAST

- 4 Check the point where sling hanger and hanger spreader bar meet.** If excessively worn, replace the bushings immediately. The hanger spreader and sling hanger wear points need to be checked for wear. If hooks appear worn, call EZ Way for instructions.



BADLY WORN

- 5 Check mounting bolts of actuator** top and bottom. Pay particular attention to top bolt hole for elongation.



ELONGATED



TOP OF ACTUATOR



Check actuator for the following.

- Inspect the plastic housing for any dents or cracks.
- Inspect the cables to see if they have been cut or pinched.
- See if the actuator appears deflected when fully extended at full load.
- Verify that the mounting points do not have any cracks or other defects.
- Verify that the inner or outer tubes do not have any dents, dings, or large scratches in them.

Contact EZ Way’s Service Department if the actuator shows any signs of the issues listed above.

- 6 Test the Emergency Stop Switch.** If the switch does not stop the lift when activated, call the EZ Way Service Department immediately!
- 7 Perform a functional test of the emergency lowering feature of the lift actuator.**
- 8 Perform a functional test of the anti-pinch feature** of the lift actuator. This feature turns the actuator off when lowering the lift arm if an obstruction is encountered.
- 9 Check all the wheels and brakes** to make sure they are functioning properly. Hair that gets picked up and wrapped in between wheels should be cleaned out so that the lift will roll easily.
- 10 Do a visual check** for any damaged, missing or loose parts. Repair as necessary.
- 11 Check the entire sling for damage or wear**, including the loops and stitching. If damage or wear is present, discard the sling and order a new one. It is recommended that slings be replaced after one year or if the sling shows any sign of damage or wear.
- 12 Cleaning the lift:** To clean the body of the lift, use standard hospital-grade germicidal cleaning products.
- 13 At six month intervals, attach a load equivalent to or within 100 lbs of the rated capacity of the lift to the unit.** Do not exceed the rated weight capacity. Raise and lower the load with the lift. Listen for any unusual noises while operating the unit. With the test load applied to the lift, check all structural welds for any signs of stress or fatigue cracks. If any unusual noises or cracks are found, stop using the lift and call the EZ Way Service Department immediately!

IMPORTANT NOTICE

It is the responsibility of the purchaser to ensure that regular maintenance inspection is conducted on this device by competent staff.

DATE COMPLETED: _____

COMPLETED BY: _____

PASS / FAIL: _____

MODEL & SERIAL NO.: _____

EQUIPMENT PURCHASE DATE: _____



EZ Way, Inc.

Warranty Information

Chassis: 10 Years

Components: 3 Years

Accessories: 6 Months

EZ Way Products are manufactured with the highest quality components. EZ Way, Inc. warrants that all new equipment, with normal use and service, will be free from defects in material and workmanship for a period of (see above) from the date of purchase by the original purchaser excluding the battery. Normal wear and tear, injury by natural forces, user neglect and purposeful destruction are not covered by this warranty.

Warranty service must be performed by the manufacturer at 710 E. Main St., Clarinda, Iowa, or by an authorized repair center at their location. On occasion, EZ Way, Inc. may authorize in-house repairs, but these repairs **MUST** be preapproved to avoid invalidation of the warranty. Services covered under warranty include any labor that takes place at EZ Way, Inc. Cost of labor incurred while installing the warranty part at the place of ownership is not covered by this warranty. EZ Way, Inc.'s obligation is limited to the replacement of parts that have been returned and are determined by EZ Way, Inc. to be defective.

THE PROVISIONS OF THIS WARRANTY CLAUSE ARE IN LIEU OF ALL OTHER WARRANTIES, EXPRESSED OR IMPLIED, AND OF ALL OTHER OBLIGATIONS OR LIABILITIES ON EZ WAY, INC.'S PART AND IT NEITHER ASSUMES OR AUTHORIZES ANY OTHER PERSON TO ASSUME FOR EZ WAY, INC. ANY OTHER LIABILITIES IN CONNECTION WITH THE SALE OF SAID ARTICLE. IN NO EVENT SHALL EZ WAY, INC. BE LIABLE FOR ANY SUBSEQUENTIAL OR SPECIAL DAMAGES. ANY MISUSE, IMPROPER INSTALLATION OR TAMPERING SHALL VOID THIS WARRANTY.

Your warranty was registered automatically by EZ Way, Inc. at time of purchase.