



EZ Way, Inc.

*"Your Total Patient
Lift Solution"*

EZ CEILING LIFT

A battery-operated patient lift that is mounted in tracks that are installed into the ceiling. The lift is used with a sling or walking harness to transfer the patient along the track.



Portable Model

MODELS

- CL650** - 650 lbs. Ceiling lift
- CL1000** - 1000 lbs. Ceiling lift
- CL650PM** - Portable 650 lbs. Ceiling lift

SAFE

- Overload protection
- Dual pawl emergency brake system
- Emergency down control
- 2" wide lift strap
- Low battery protection
- Visual battery gauge
- 4-point spreader bar for maximum patient comfort

DURABLE

- All-metal drive train
- 20 amp high torque motor
- 120 lifts per charge

INTELLIGENT

- On-board intelligence-to-monitor usage
- Backlit LCD screen
- Usage time captured

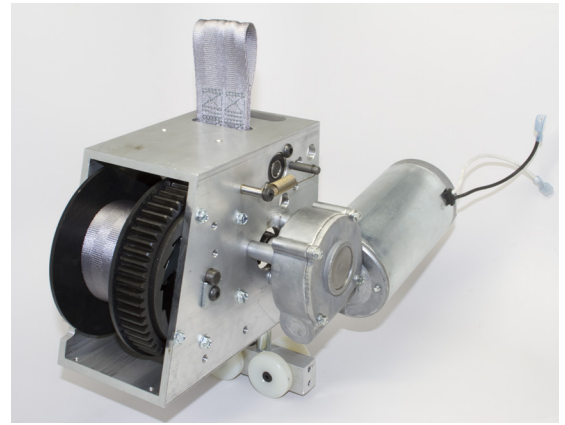
OPTIONS

- Inspection reminder
- Power traverse
- Continuous charge

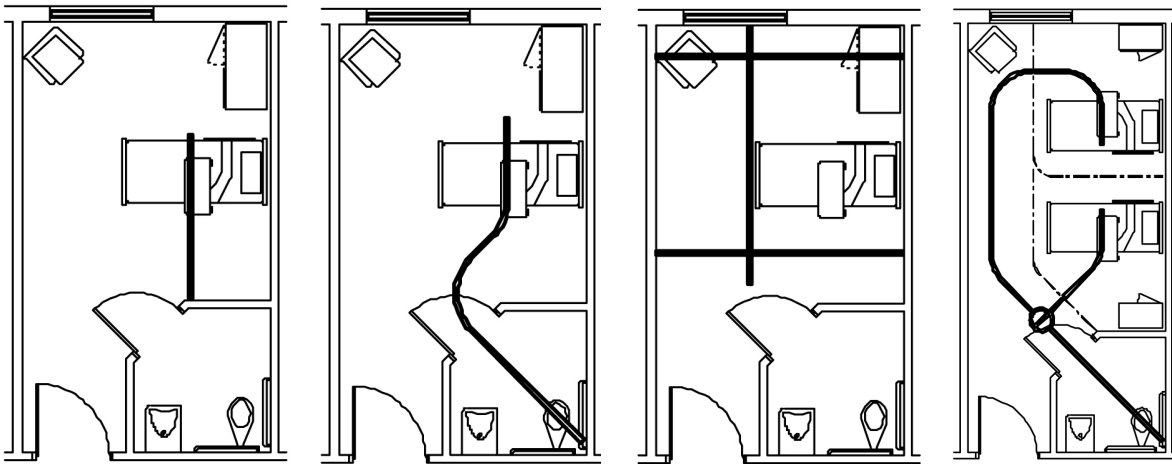


"Your Total Patient Lift Solution"

Form #2-318
Rev. 12/05/18



Heavy duty motor and extra wide gear are designed for long life with continual use.



TRACK LAYOUTS
These are just a few of the many track layout options available for specific needs including curves, turntables, door pass through and XY axis configurations.

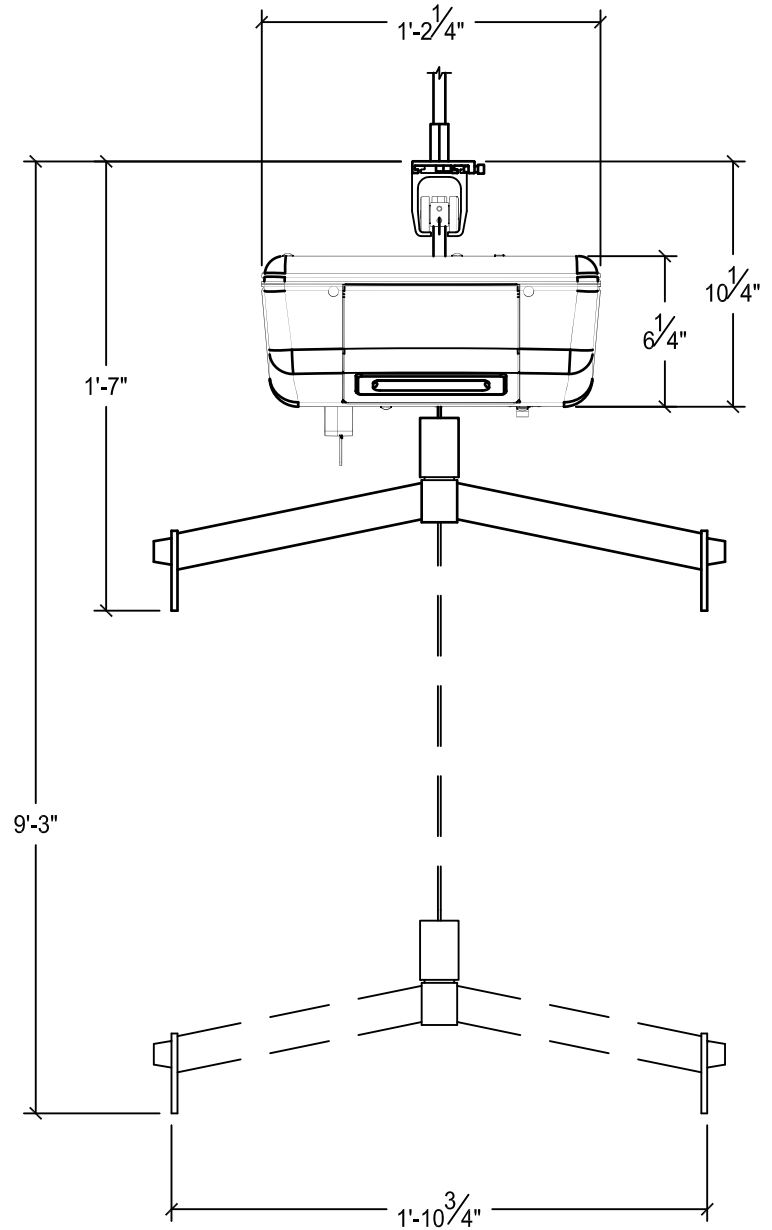
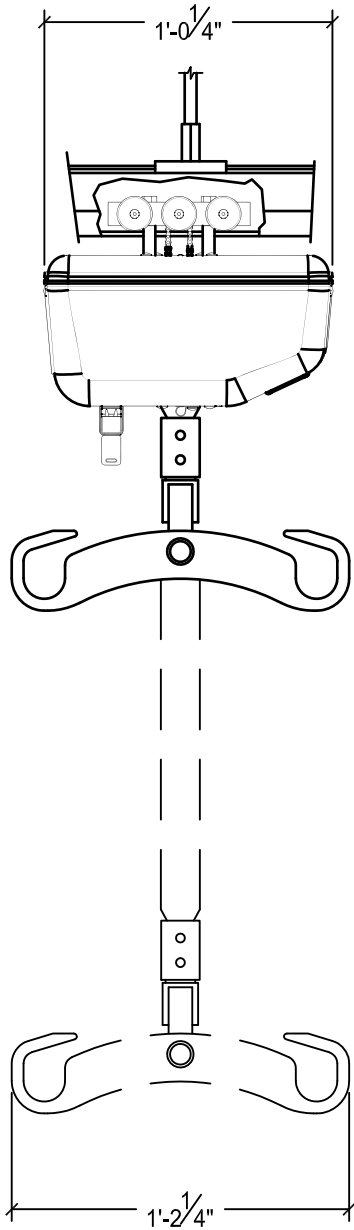
ADDITIONAL FEATURES

- Emergency Down
- Emergency Stop
- Manual Down
- Strap Tension and Angle Protection
- Over Current Protection
- Low Battery Cut-Off
- Emergency Brake

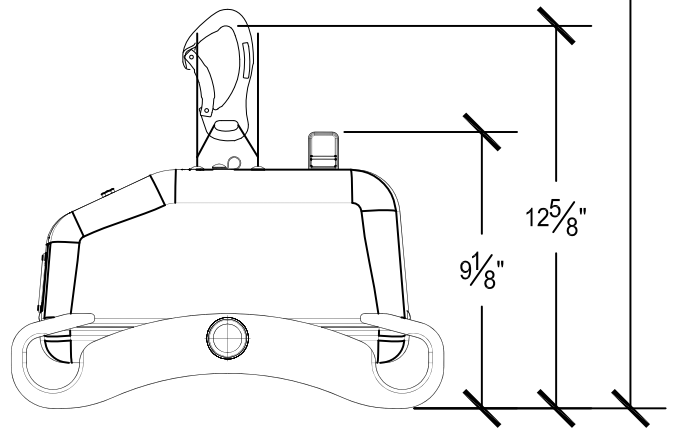
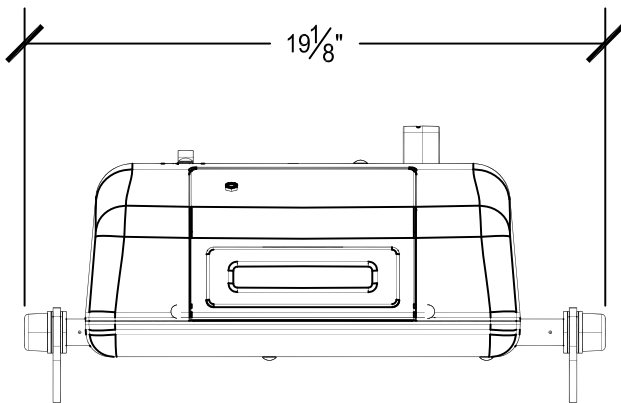
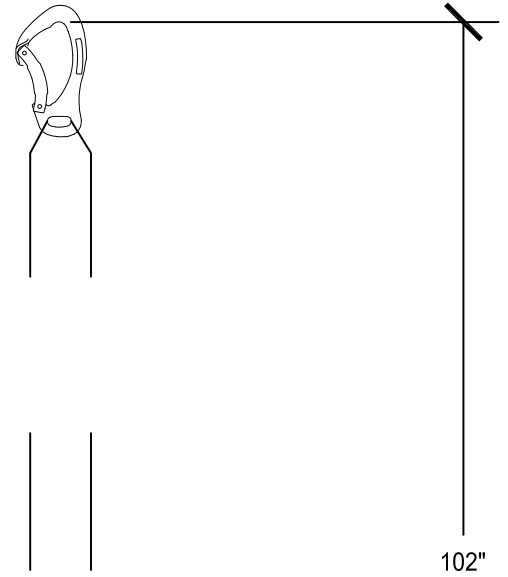
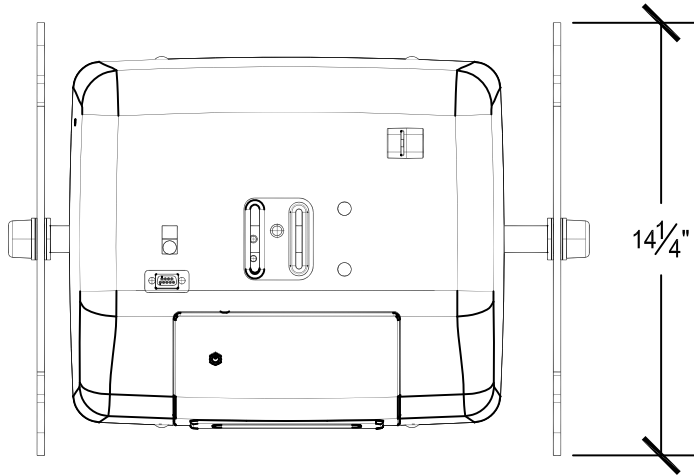
	CL650PM	CL650	CL1000
Capacity	650 lbs. (295 kg)		1000 lbs. (454 kg)
Size	14.25" x 19.125" x 9.125" (36.2 x 48.5 x 23.2 cm)		14.25" x 12.25" x 6.25" (36.2 x 31 x 16 cm)
Overall Weight	27 lbs. (12.2 kg)	29 lbs. (13.2 kg)	31 lbs. (14 kg)
Traversing	Manual	Manual / Optional Power Traverse	
Lifting Belt	2" (5.1 cm) wide, 94" (2.4 m) spoolable length		
Up/Down Speed	3.42 cm/second		2.3 cm/second
Drive Train	All metal gearing		
Braking System	Dual-pawl emergency brake		
Batteries	2-12 V SLA, 4.0 Ah	2-12 V SLA, 5.0 Ah	
Charger Input	120 VAC, 60 Hz, 1 Amp, Power Cord (NEMA 5)		
Lift Cycles Per Charge	Approx. 120 @ 200 lbs. (90.7 kg) load		Approx. 50 @ 500 lbs. (226.8 kg) load
Controls	Hand-held remote, plus on-board controls, electronic soft-start and soft-stop		
Motor Rating	20 Amp		
Signals/Alerts	Power-on, Connected-to-charger, Low battery, Emergency down, Overload, Overheat, Start-up electrical fault modes		
Safety Features	Emergency Down, Emergency Stop, Manual Down, Strap Tension and Angle Protection, Over Current Protection, Low Battery Cut-Off, Emergency Brake		

PO Box 89, 807 E. Main • Clarinda, IA 51632 • 1-800-627-8940

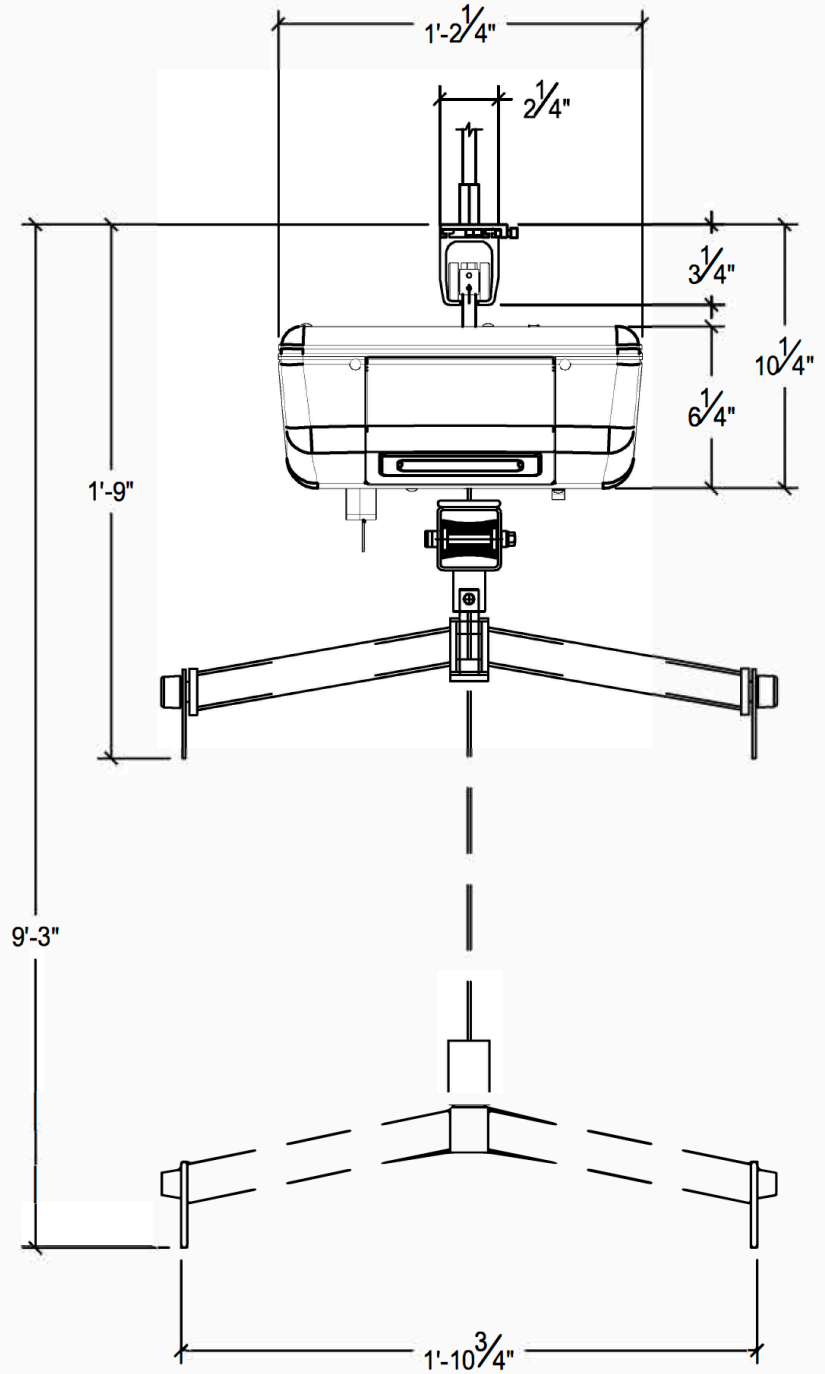
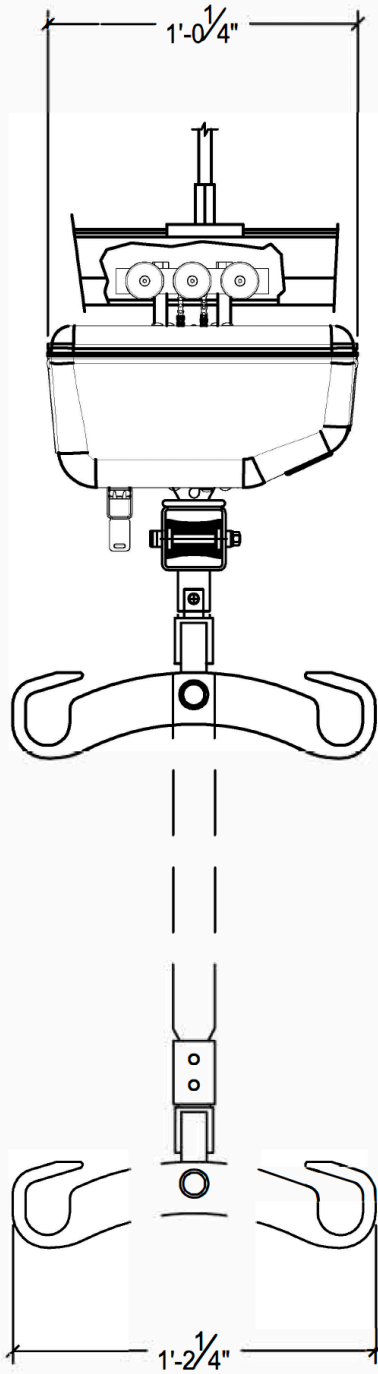
CL650 Ceiling Lift Motor



CL650PM Portable Ceiling Lift



CL1000 Ceiling Lift Motor

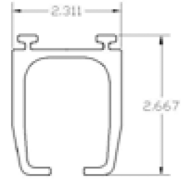
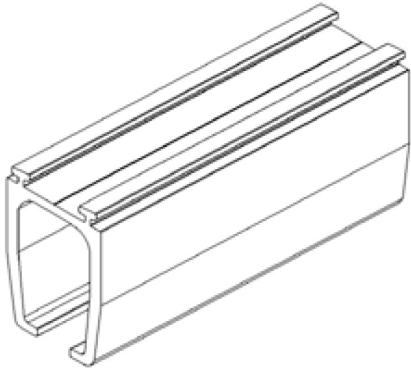


Considerations for Choosing a Lift Motor

The lift motor comes in two configurations, fixed or portable. Following are some considerations when choosing which type of motor to use.

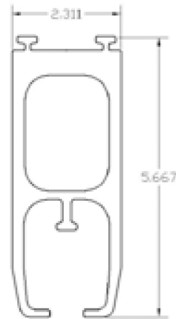
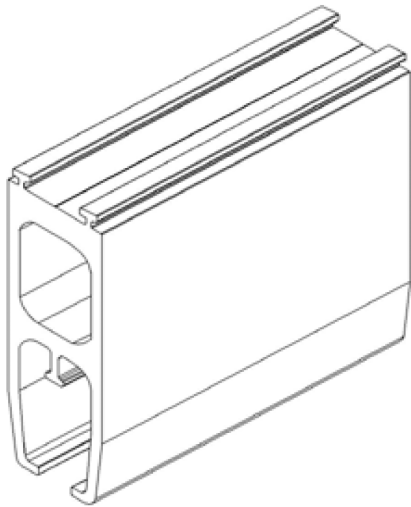
- **Cost:** The portable motor offers significant cost savings when tracking multiple rooms. Not every patient will need a lift, for this reason we have designed the portable motor to be shared among several rooms. Some clients are choosing to install tracks in every room and purchase a few motors. Many times, motors are stored and maintained by a Central Supply Station and delivered to a room when an admitted patient will need a lift. When the patient is discharged the lift returns to Central Supply. Alternatively, the motors are stored and charged in a common area on the floor and taken to the room when a patient transfer is needed.
- **Functionality:** Where the portable motor has an advantage from a cost standpoint, the fixed motor has a convenience advantage. Because a fixed motor is purchased with each track system, the lift is always in the room and ready to be used. The staff will not need to look for the motor before they can use it. The motor is battery operated and charged at the end of the track. We strategically locate the charging station so the motor can be returned to the charging station after each use. An additional feature which makes this easy is the Return to Charge function. With the push of a button the lift will retract to the ceiling and return to the charging dock, and will lower to a height that it can be reached. This function ensures that the lift will always be ready to use.
- **Weight Capacity:** EZ Way offers the largest capacity lift motor on the market. At 1000 lbs., it has the capacity for every occasion. If you don't need this much capacity, you can select our 650 lb. capacity fixed motor or 650 lb. capacity portable motor to better meet your needs.

Whatever your needs are, EZ Way is here to help you. We can aid in track layout design and provide CAD drawings of the final layout, and are happy to assist in pre-construction meetings to ensure the lift project integrates seamlessly with other trades on the job.



Standard Track

EZ Way's standard track is made of high quality aluminum. It is used for linear systems, gantry systems, and curved tracking. The track is designed to accept motor capacities up to 1000 lbs. This allows for future upgrades to higher weight capacities.

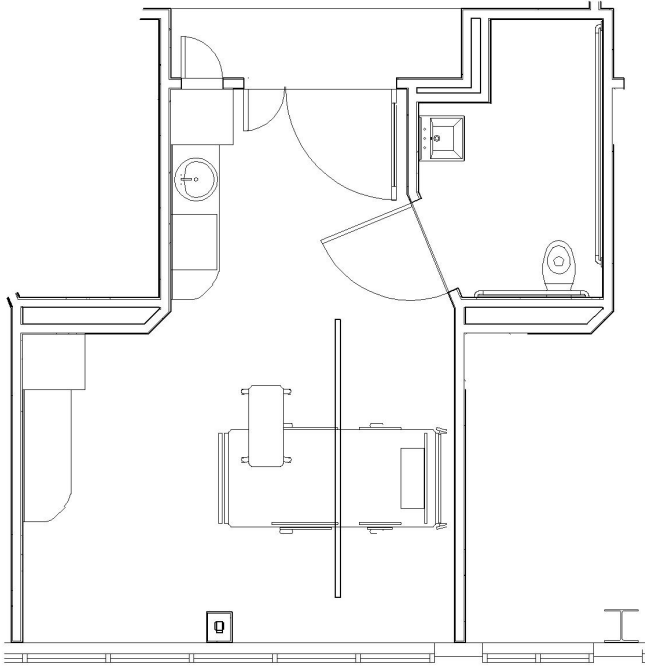


Extra Tall Track

EZ Way's extra tall track is used where long spans require a heavier section. Its heavy wall section gives it exceptional rigidity. Applications include wall mount systems, and gantry systems up to 1000 lbs. Refer to the table below for information on maximum spans.

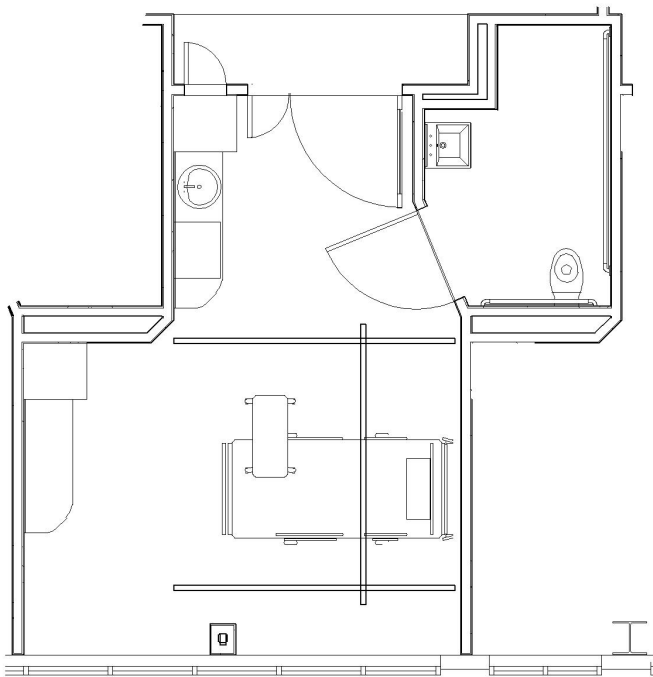
Motor Capacities

	650 lb. Capacity	1000 lb. Capacity
Standard Track	39 inches (Linear System) 108 inches (Gantry System)	39 inches (Linear System)
Extra Tall Track	180 inches	108 inches



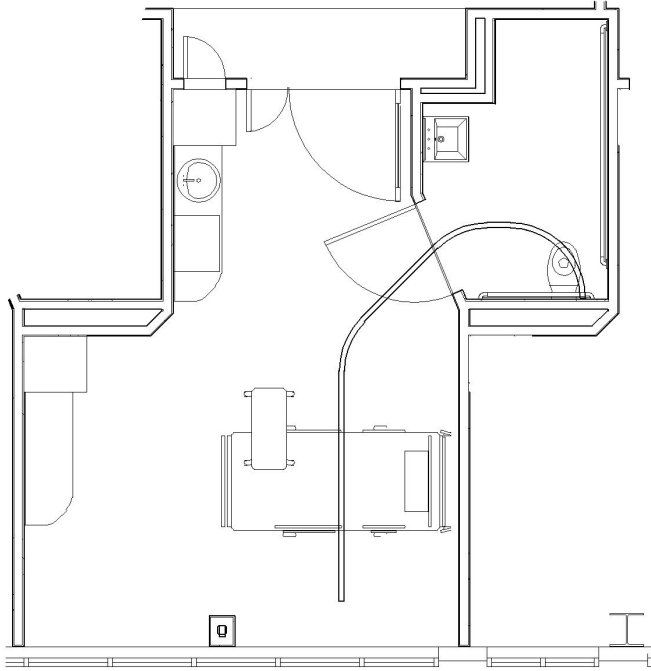
Straight Track

The straight track system is our simplest and most economical installation. The track is most commonly installed perpendicular to the bed or at a slight angle. It is useful for out of bed transfers and repositioning. Its low cost makes it ideal for situations where budget is a concern. It is compatible with weight capacities up to 1000 lbs.



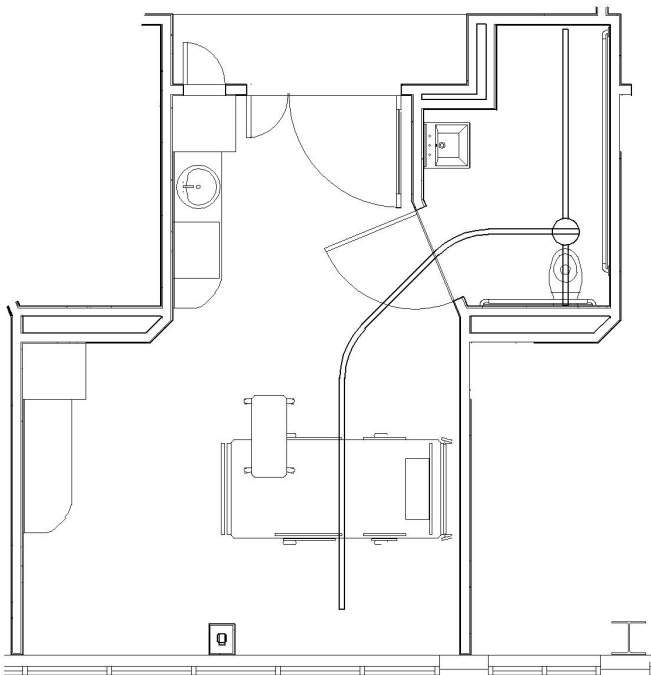
Gantry System

The gantry system adds the functionality of transferring in two directions. The motor is mounted to the middle rail which can travel along the fixed side rails. This system is often chosen when a great deal of patient repositioning is needed. It is also very useful if a patient falls when getting out of bed on their own. The fixed rails can be extended to provide full room coverage, allowing transfers to other furniture pieces in the room. It is compatible with weight capacities up to 650 lbs. when using our standard track and up to 1000 lbs. when using the extra tall track.



Linear Tracking

When access to the toilet area or other areas of the room are needed, EZ Way's curved tracks are often used. The curved tracks come in 45 and 90 degree bends and can be combined with our straight track to complete the system. This system can be used for out of bed transfers, repositioning, toileting, and transfers to a shower chair. This system is compatible with lifts up to 1000 lbs.



Turntable

The turntable is combined with our standard track when multiple locations are to be served with one lift. It allows movement in different directions. Some common uses for the turntable are bathrooms where access to both the toilet and shower area are needed, and in semi-private rooms allowing both patients access to a common bathroom. The turntable is compatible with lifts up to 650 lbs.



The EZ Way Ceiling Lift is an ideal solution for transfers in spa rooms.



Curved track systems are designed to access other areas like bathrooms.



Full height doors can be specified to allow the track to pass into the bathroom.





The single rail system is a popular solution for transfers in CT.



The EZ Way Ceiling Lift can be nested with other overhead gantries to provide transfer solutions in X-Ray.



Moving gantry systems are joined to stationary tracks using the gate. These photos show how bathroom access can be provided while using the gantry system over the bed.

