

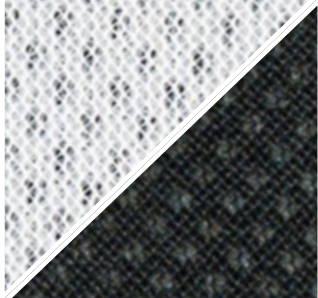
EZ WAY LIFT & STAND ACCESSORIES CHECKLIST

	STYLE	FABRIC						OPTIONS							APPLICATIONS														
	Type	Washable (Canvas)	Wipeable	Single-Patient Use	Mesh*	Neoprene (Anti-Slip)	Anti-microbial	Spacer Fabric	Belted	Toileting Hole	Head Support	Black Mesh	Fleece Lining	Kit w/bars	Leg Straps	Standard Transfers	Pivot Transfers	Amputee	Toileting	Additional Lower Body Support	Hip Stabilization	Cleaning/Catherization	Non-Crossing of Sling	Larger Lower Extremities	Repositioning	Turning	Ambulation	Vehicle Extraction	Other
LIFT ACCESSORIES	Regular Sling (No leg padding)	●		●	●		●			●					●			●											
	Deluxe Sling (Padded legs)	●	●		●		●	●	●		●	●	●			●			●										
	Multi-Purpose Sling	●	●	●	●		●	●	●		●		●					●	●		●	●	●						
	Hourglass Sling	●	●		●			●	●	●	●	●				●		●	●				●	●		●			
	Hip Sling	●	●		●														●				●	●					
	Stretcher Sling	●	●		●									●						●									
	Child's Deluxe Sling	●	●		●						●					●			●										
	Turning/ Repositioning Sheet	●	●	●	●			●		●		●													●	●			1
	Twin Turner Sling				●							●										●			●	●			
	Hygiene Sling				●				●										●										
	Full-Body w/Leg Support Sling	●	●		●															●	●								
	EZOUT Sling		●																										●
	EZ Light Lift Sling	●																											●
	Walking Harness		●			●																						●	
	Limb Turning/ Lifting Strap Kit	●	●																			●				●			
	Limb Lifting Strap	●	●	●																		●							
Gait Training Sling										●																●			
Load Testing Sling		●																										4	
STAND ACCESSORIES	Harness	●	●	●		●	●							●		●		●											
	Seat Strap	●	●												●	●			●								●		
	Stand Support Strap	●	●																●									2	
	Chest Strap		●													●											●	2	
	Walker Handles		●																								●		
	Half Shin Pad		●												●	●	●							●				3	
	Bariatric Shin Pad		●												●	●	●							●					
	Bariatric Foot Plate														●	●								●					
	Wrist Strap	●													●	●								●					
	Flexible Fabric Shin Pad		●												●	●	●							●					

* Excellent for bathing purposes Please consult your EZ Way Territory Sales Manager on compatible options
⚠ WARNING: Cancer and Reproductive Harm - www.P65Warnings.ca.gov.

1 - Use with bed pan **2** - Frame support & Standing Therapy **3** - Use with leg cast / rehab **4** - Use with Stand or Lift (not for use on patients / residents)

Types of Fabric



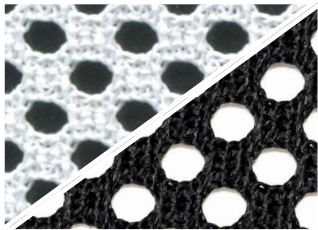
Spacer

A three-layer fabric that releases moisture, allows air flow, and dissipates heat. It provides four-way stretch, naturally ventilating properties that take moisture away from the skin, and soft, cushioning characteristics to reduce force. Shown in studies to be the most effective in reducing peak pressures, and more likely to reduce the risk of pressure ulcer development if left under the patient. This fabric is available in white or black.



Wipeable

Our wipeable fabric is made with Herculite Sure-Check material that was designed for healthcare for safe, comfortable, long-lasting use. It is stain resistant, flame resistant, fluid and moisture resistant, and has an antimicrobial protection system which lasts for the life of the fabric. It has been tested and approved with most standard germicidal cleaners.



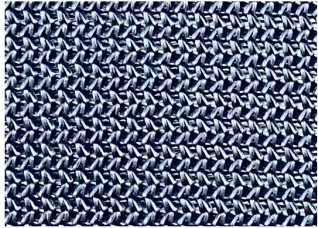
Mesh

Our mesh fabric wicks away moisture, and allows air flow making it ideal for bathing purposes. It is an excellent choice for people with wounds since it allows air flow to help with faster healing. This fabric is available in white or black.



Washable

This comfortable fabric is used with most of our accessory styles and made of durable polyester fabric. It is designed to be laundered and reused until it exhibits signs of wear.



Antimicrobial

Our antimicrobial sling fabric was designed for healthcare. It is made of DAF Tricot Polyester fabric with an antimicrobial treatment which resists bacterial growth, mildew, rot, and provides dust mite protection. The fabric is tested using the AATCC 147-2011 test method for antibacterial activity of textile materials.



Antislip

This neoprene-like fabric is an option on our harnesses. It helps to prevent the harness from slipping up on the patient.



Single-Patient Use

This fabric is made of a 100% breathable polyester fabric. Accessories made of single-patient use fabric help to reduce the risk of cross-contamination, while increasing the level of infection control. The accessory can be used multiple times with the same patient until either the patient is discharged or the accessory becomes soiled. It should be disposed of at this time. It cannot be laundered.